

# RADIO SAPIENZA

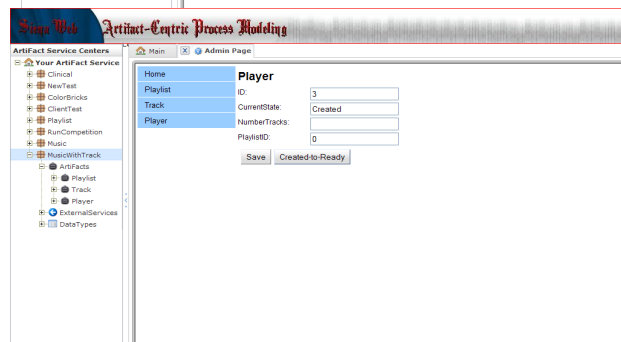
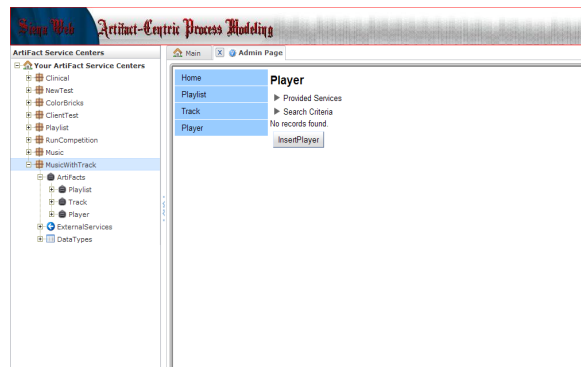
## CREATE NEW PLAYER

### INSERT PLAYER:

- In the menu, right click on the **MusicWithTrack** button and choose the option Redeploy.
- Click on the button **Player** in the menu that is in the left side on the main page and later click to **InsertPlayer**
- You can leave the fields empty.

### PLAYER READY:

- Click on **Player** and select the player that you have created.
- Click on **Created-to-Ready** and the player is ready to play.



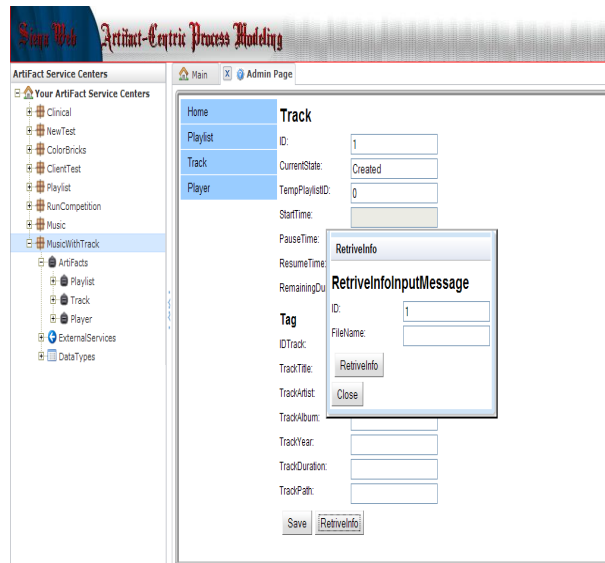
# CREATE A NEW TRACK AND RETRIEVE THE INFORMATIONS

## INSERT A TRACK:

- Click on **Track** in the main page.
- Click on **InsertTrack** in order to create a new instance of Track.

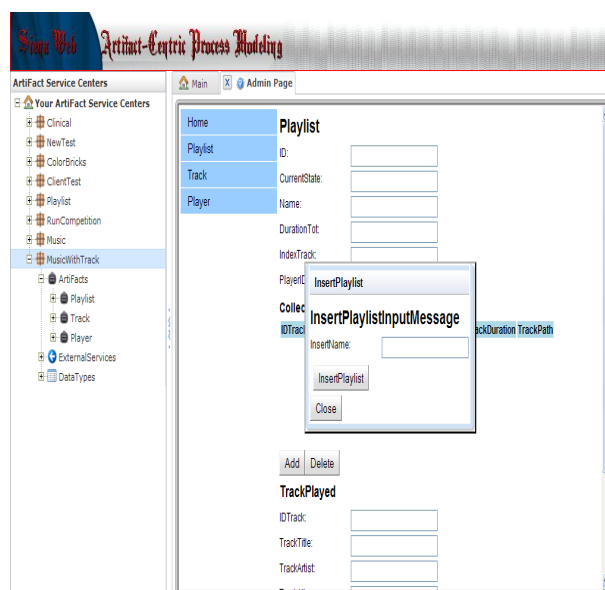
## RETRIEVE THE TAG:

- Click on **RetrieveInfo** and write in the field FileName the name of the file that you want to upload (ex One.mp3)
- It is possible to upload only the music files that are stored on your computer( in the directory C:\)



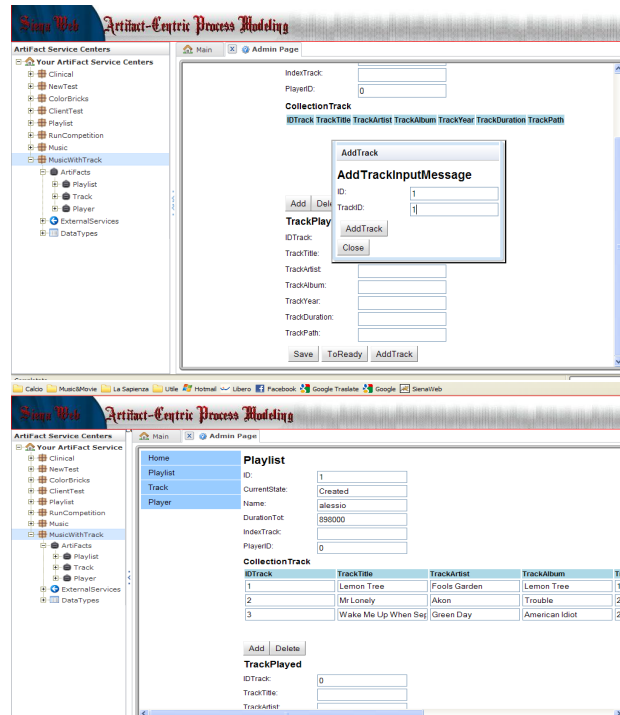
# CREATE THE PLAYLIST

- Click on the button **Playlist** in the main Page and later on **InsertPlaylist**
- Insert the name of the playlist and click again on the button **InsertPlaylist**



# ADD TRACKS TO THE PLAYLIST

- Click on the button **AddTrack** and insert the ID of the track that you want to add.
- You can repeat this operation for all the tracks that you want to add.
- At the end you can see the list of the tracks added in the field CollectionTrack



# PLAY THE PLAYLIST

- Open WinAmp
- Click in Siena **PlaylistStart** and WinAmp starts to play.



# CONTROL THE PLAYER

- You can control WinAmp from Siena using the buttons that are in the bottom.
- In TrackPlayed Siena shows the track that WinAmp is playing.

